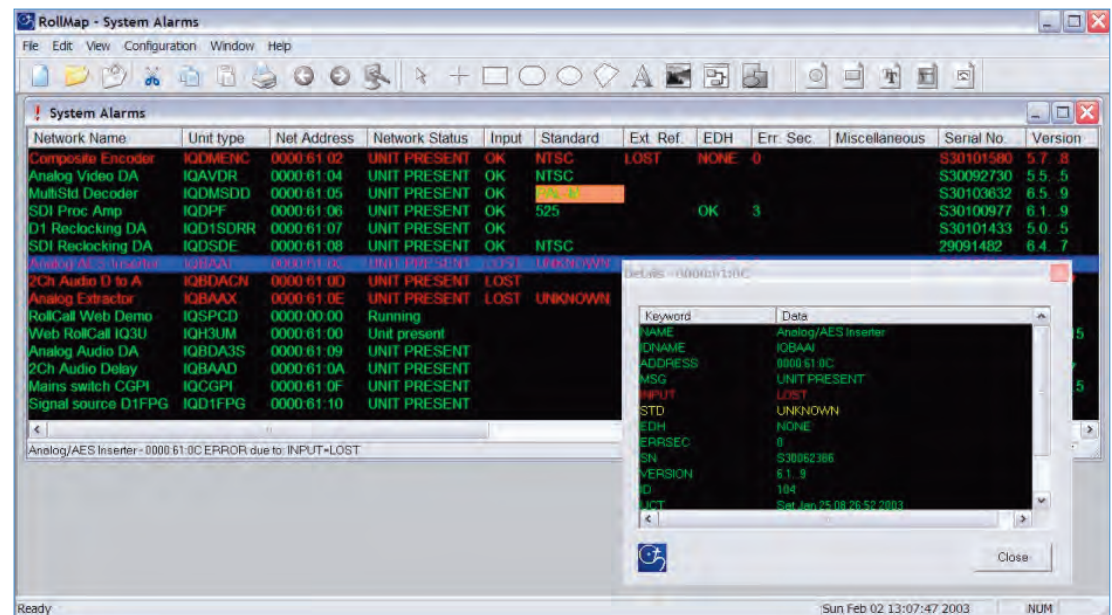


# ROLLCALL Middleware Services

System Logging and Monitoring Services for RollCall

The **ROLLCALL** Middleware Services extend the capabilities of a RollCall control system by adding a range of back end services which enable secure TCP/IP access to your Infrastructure, real time and historic logging, remote monitoring and configurable alarming of your Snell & Wilcox infrastructure. This product also provides the core services required for implementing the RollMap and RollSNMP Infrastructure Management systems tools.



## The Middleware Services feature

- Real time and historic logging of system events - RollCall LogServer provides a real time system status via an IP socket and also writes all events to disk for continuity purposes. Disk logs can be saved by date / timestamp or file size. These disk logs can be utilized offline for trend analysis and system audits.
- TCP/IP connection sharing and security service - IPShare enables PC workstation access to equipment on the RollNet Network via TCP/IP. Access to the IPShare service can be restricted by IP Address or Hostname. IPShare is ideal for delivering Local & Wide area network access to products that do not feature direct Ethernet control capability.
- Real time visual status monitoring - RollView32 monitoring application incorporating SNMP 'one-trap' generation for all RollCall events enabling integration into other vendors SNMP management systems. RollView32 enables a simple 'traffic light' color scheme to indicate system status, with configurable alarm status 'tabs' to help you segment the reporting of your system into logical functions or physical locations. External notification alarms can be delivered from the monitoring application in a number of ways, including email, SNMP Trap, audio playback of .wav or mp3 files and GPI output via the IQCGPI Modular GPI/O interface card.

- Full RollCall control & monitoring network aggregation using 'RollIPM' - TCP/IP connection manager to enable connection and logging from multiple IP enabled RollCall products or discrete RollNet Networks.

RollCall Middleware services include the RollCall control panel application (ROLLCALL) and can be used as a standalone monitoring environment or an enabling platform for the advanced system monitoring applications delivered by RollMap Infrastructure Management System & RollSNMP.

Snell & Wilcox can provide commissioning services to develop and deploy your Infrastructure Management System as well as training courses on building and administering RollMap systems. Please consult your local sales representative for further details.

Snell & Wilcox Inc.  
3519 Pacific Ave.  
Burbank, CA 91505  
Tel: +1 818 556 2616  
Fax: +1 818 556 2626  
info@snellamerica.com

Snell & Wilcox Ltd.  
Southleigh Park House,  
Eastleigh Road, Havant,  
Hampshire PO9 2PE, UK  
Tel: +44 (0)23 9248 9000  
Fax: +44 (0) 23 9245 1411  
info@snellwilcox.com

Snell & Wilcox (Hong Kong) Ltd.  
Room 603, Tai Tung Building,  
No.8 Fleming Road,  
Wanchai, Hong Kong  
Tel: +852 2356 1660  
swhk@snellwilcox.com.hk

Company policy is one of continuous product improvement. Specifications are therefore subject to change without notice.

Snell & Wilcox, Putting Pictures to Work, RollPod and RollCall are trademarks of the Snell & Wilcox Group.

All other trademarks mentioned herein are duly acknowledged.

© 2006 Snell & Wilcox Limited  
All Rights Reserved

### Does this product suit your application?

- Monitor and report events across your system infrastructure including:
  - Signal input condition
  - Environmental status
  - Power supply and card health status
- Flexible and configurable external alarm notification capability
- Rapid control and monitoring access via configurable tabs
- Secure access to equipment services by password or IP address guest lists
- Operates through Ethernet / TCP/IP network, RollNet Interface cards (RollPCI or RollPCM)
- Supports Microsoft Windows XP and Windows 2000

### Why should you choose this product?

- Maximize system uptime with centralized monitoring and control
- Intelligent notification and alarming with RollView32 minimizes staffing requirements by increasing efficiency
- Configurable to specific customer requirements
- Monitor your system from anywhere with true TCP/IP enabled monitoring and control capability
- Middleware services provide the base for RollMap and RollSNMP Network Management Systems

### Ordering Information

#### ROLLMIDSRV

#### Licence

RollCall Middleware Services for Windows XP and Windows 2000

The RollCall Middleware Services suite provides one licensed copy of each service application to be run in a system installation. There is no restriction on the number of copies of the RollCall Control Panel or RollView32 Monitoring application that are installed per system.